

Seven Stars

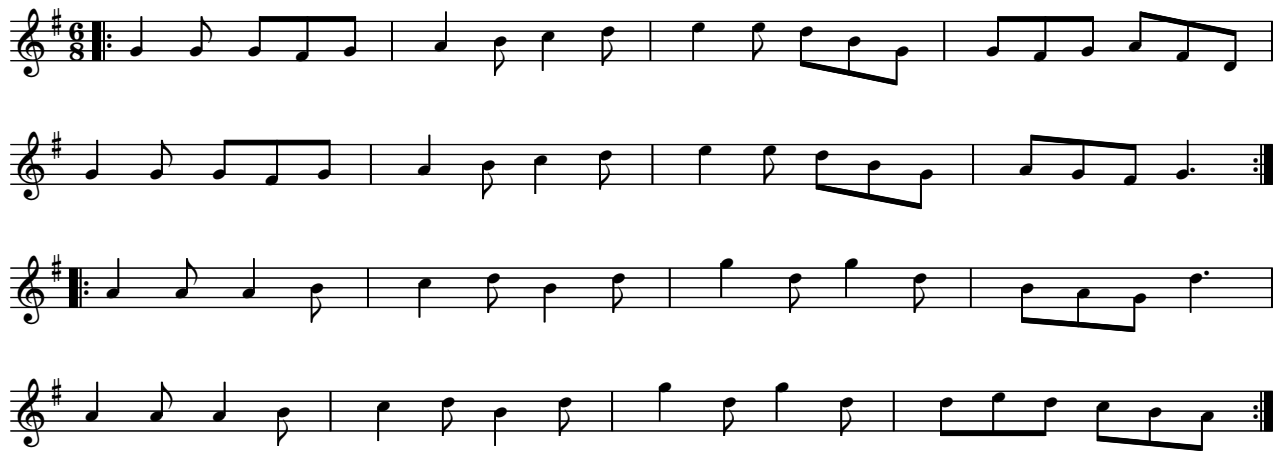
Traditional

Four staves of musical notation for the piece 'Seven Stars'. The music is written in 6/8 time and the key of D major (indicated by two sharps). The notation includes various note values such as eighth and sixteenth notes, as well as rests. The first two staves end with repeat signs, and the last two staves also end with repeat signs.

Welch Family Jig

Four staves of musical notation for the piece 'Welch Family Jig'. The music is written in 6/8 time and the key of D major (indicated by two sharps). The notation includes various note values such as eighth and sixteenth notes, as well as rests. The first two staves end with repeat signs, and the last two staves also end with repeat signs.

## Michael Turner's Jig



## Veleta Waltz (Percy Brown's)

Traditional



# CRAWLEY FOLK FESTIVAL 2009

English tunes practice session with Spare Parts Concertina Band

([www.sparepartsband.co.uk/](http://www.sparepartsband.co.uk/))

Saturday 27<sup>th</sup> June, 10.30 - 11.30 a.m.

The Hawth Studio, Hawth Avenue, Crawley RH10 6YZ

**Bryan Creer:** treble/tenor English concertina, fiddle ([bryancrer@aol.com](mailto:bryancrer@aol.com))

**Valmai Goodyear:** treble & baritone English concertina, voice ([valmaigoodyear@aol.com](mailto:valmaigoodyear@aol.com))

**Suzanne Higgins:** McCann duet concertina, voice, ([higgins663@btinternet.com](mailto:higgins663@btinternet.com))

**Spare Parts** play arrangements of British dance music on concertinas and fiddle.

We also sing in harmony and with the concertinas. The three of us help to run the **Lewes Saturday Folk Club** ([www.lewesarmsfolkclub.org.](http://www.lewesarmsfolkclub.org.)) in **Lewes, Sussex**, which meets every Saturday night and also puts on the nationally-known **Elephant Folk Music Workshops** for folk musicians and singers. Bryan runs the monthly session **Concertinas Anonymous** there. Also at the **Elephant & Castle**, Bryan and Valmai support Andy Warburton in running the monthly **Lewes Favourites** for people wanting to learn tunes popular in local English tunes sessions and helped to compile the **Lewes Favourites tune book** which resulted from the practice evenings.

## Bromsberrow Heath (Beatrice Hill's 4 Hand Reel)



## Albert Farmer's Bonfire Tune

